

FOR CONTINUATION SEE LOWER LEFT



- Staff**
- Executives ■ ■ ■ ■
 - Physicians ■ ■ ■ ■
 - Directors/ Mid-Level ■ ■ ■
 - Staff hired prior to 04/30/2001 ■ ■
 - Staff hired after 05/01/2001 ■

Executives [includes Vice Presidents and above, Division Chiefs]
Physicians [includes Physicians, Radiologists, and Emeritus]
Directors / Mid-Level [includes Physician Assistants, Nurse Practitioners, Residents]
 Staff hired after 05/01/2001 [Parking assignment weekdays from 0500-1330. See below for nights, weekend, and holiday assignment]
 Please note, the Prospect Lot is a 'park and walk' lot.

Medical Center | 1st Shift:

- Plymouth Lot, 522 Plymouth Ave NE
- E. Michigan Lot, 1503 Michigan St NE
- Prospect Lot, 333 Michigan NE
- North Ramp - Lafayette Ave Entrance
- North Ramp - Executive + Physician Entrance
- South Ramp - Barclay, Lyon, or Ransom Entrance
- Ramp 3 - P4 Only
- Ramp 5 - P4 Only
- Ramp 6 - Level 3 + 4 Only
- Ramp 8 - Lower Level
- 21 Michigan - Division Only

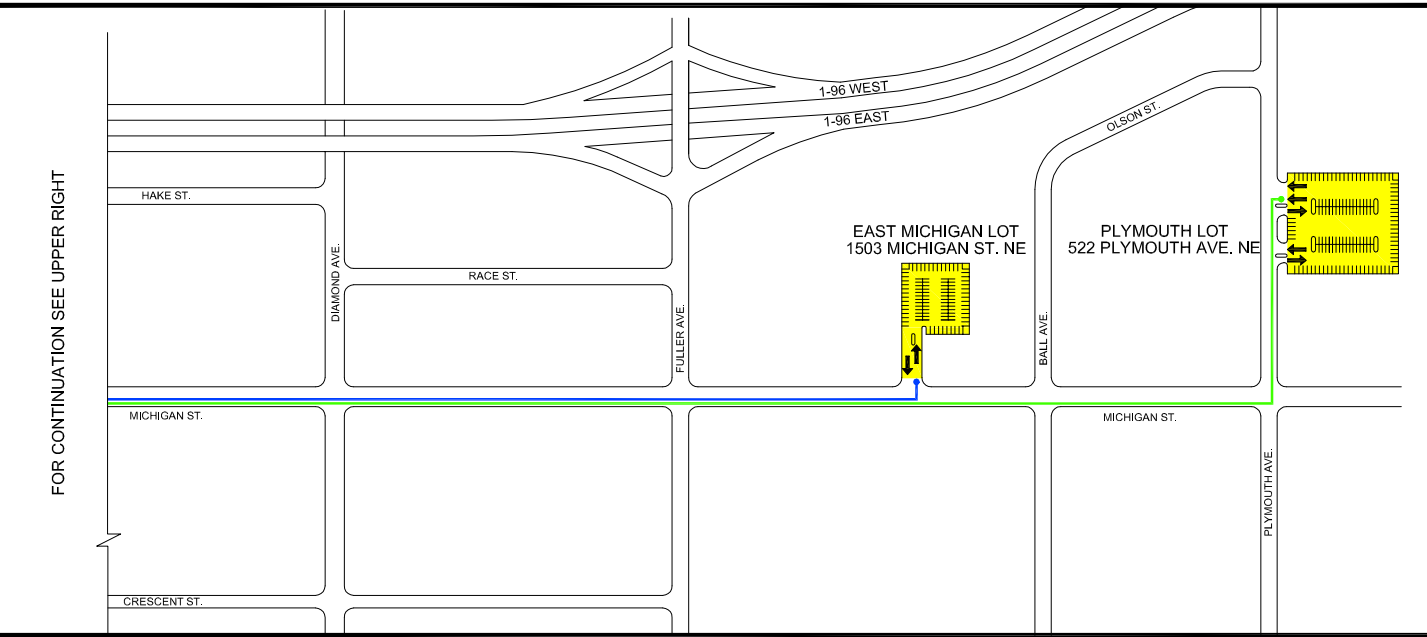
Medical Center | Nights, Weekends, Holidays:

- North Ramp - Lafayette Ave Entrance
- South Ramp - Barclay, Lyon, or Ransom Entrance
- Ramp 3 - P4 Only
- Ramp 5 - P4 Only
- Ramp 6 - Level 3 + 4 Only
- Ramp 8 - Lower Level
- 21 Michigan - Division Only

Shuttle Services arrive and depart to/from parking lots every 10-15 minutes during peak times. Shuttle services can be influenced by traffic and weather, so these times are approximate. Non-peak times are defined as: 9 a.m. to 2:30 p.m. and 6 p.m. to 10 p.m. Staff requesting shuttle service during non-peak times, may call the Facility Support Center (FSC) at 391.1425.

Medical Center Shuttle Schedule/Routes

Route	Parking Lot	Pick-Up / Drop-Off	Shuttle Times
1	<u>East Michigan Lot</u> 1503 Michigan Street NE Grand Rapids, MI 49503	Between Tower 25 & Tower 35	0500 - 2145
2	<u>Plymouth Lot</u> 522 Plymouth Avenue NE Grand Rapids, MI 49503	Barclay Avenue & Crescent Street	0500 - 2200



FOR CONTINUATION SEE UPPER RIGHT